



# Navigating Metabolic Complexity and in-Depth Analysis of Metabolic Syndrome among Diabetes Mellitus Patients: A Systematic Review and Meta-Analysis

*Meiwen Zhang<sup>1</sup>, Bo Lou<sup>1</sup>, \*Weiyuan Huang<sup>2</sup>*

1. Endocrinology Department, The First People Hospital, LinPing District, Hangzhou, Zhejiang Province, 311100, China

2. Endocrinology Department, Zhejiang Medical and Health Group Hangzhou Hospital (Hanggang Hospital), Hangzhou, Zhejiang Province, 310022 China

\*Corresponding Author: Email: weiyuan\_huang@sina.com

(Received 11 Feb 2024; accepted 10 May 2024)

## Abstract

**Background:** This systematic review and meta-analysis aimed to evaluate the prevalence and clinical implications of metabolic syndrome in individuals with diabetes mellitus.

**Methods:** A comprehensive search was conducted across multiple databases using key terms related to metabolic syndrome and diabetes. Access to subscription-based journals was facilitated through the HINARI program. Study quality was assessed using the adapted Newcastle–Ottawa scale, with a minimum inclusion score of  $\geq 5/10$ . Statistical analysis included a meta-analysis using the DerSimonian and Laird random-effects model to determine the pooled prevalence, with heterogeneity assessed using Cochran's Q and  $I^2$  statistics. Publication bias was evaluated via funnel plot symmetry. Analyses were conducted using Stata/MP 17.0.

**Results:** The meta-analysis revealed a pooled effect size of 1.98 (95% CI: 1.85, 2.10), with significant heterogeneity ( $I^2 = 92.35\%$ ). Prevalence ranged from 19.88% to 88.13%, underscoring a substantial burden. Variations in HbA1c, HDL cholesterol, blood pressure, and BMI highlighted the heterogeneity in metabolic syndrome characteristics. Advanced statistical approaches enriched the understanding of metabolic profiles and their interplay with glycemic control and lipid metabolism.

**Conclusion:** This study underscores the critical interplay between glycemic control and lipid profiles in metabolic syndrome. The findings emphasize the need for tailored, region-specific interventions to address its substantial burden and implications for clinical practice and policy.

**Keywords:** Metabolic syndrome; Diabetes mellitus; Meta-analysis; Body mass index; Blood pressure

## Introduction

Metabolic syndrome, also referred to as Syndrome X or Insulin Resistance Syndrome, encompasses a constellation of conditions, including glucose intolerance, hypertension, dyslipidemia, and central obesity, with insulin resistance at

its core (1). Defining metabolic syndrome has posed challenges, with a recent consensus highlighting the use of ethnic-specific criteria. This approach incorporates indicators like waist circumference for central obesity, triglyceride and



Copyright © 2025 Zhang et al. Published by Tehran University of Medical Sciences.

This work is licensed under a Creative Commons Attribution-NonCommercial 4.0 International license.

(<https://creativecommons.org/licenses/by-nc/4.0/>). Non-commercial uses of the work are permitted, provided the original work is properly cited

high-density lipoprotein (HDL) cholesterol levels for dyslipidemia, and blood pressure exceeding 130/85 mmHg (2). Controversies persist regarding the inclusion of dysglycemia, central obesity, and insulin resistance as essential components (3).

Despite definitional nuances, the prevalence of metabolic syndrome is increasing globally, notably in both Western and Asian countries experiencing rapid socioenvironmental changes. Clinical trials underscore metabolic syndrome as a significant risk factor for cardiovascular disease (CVD), type 2 diabetes mellitus (T2DM), and all-cause mortality (4). Recognizing its predictive value for major metabolic disorders, metabolic syndrome emerges as a practical tool. Recent studies, however, tend to emphasize its role as a CVD risk factor, often overshadowing its significance in predicting incident diabetes (5).

The prevalence of metabolic syndrome among diabetes mellitus patients poses a significant health challenge, necessitating a thorough understanding of its various components and their interrelationships. While previous research has explored aspects of metabolic syndrome, there remains a need for a comprehensive review that synthesizes existing literature to provide a holistic understanding of this complex condition. Our study aimed to fill this gap by conducting an in-depth analysis of metabolic syndrome in diabetes mellitus patients through a systematic review and meta-analysis of relevant studies. This review aimed to bridge this gap by consolidating evidence supporting metabolic syndrome as a predictor for diabetes mellitus. Additionally, we explore its utility in clinical practice, particularly emphasizing its predictive value for diabetes. The prevalence of metabolic syndrome varies globally, ranging from 20% to 25% in the adult population and 0 to 19.2% in children (6,7). In T2DM patients, the prevalence can reach almost 80%. Studies on type 1 diabetes mellitus patients exhibit a wide range, from 3.2% in Poland to 57.1% in Finland, underscoring the influence of population characteristics and diagnostic criteria (8-10).

Diabetes mellitus, a metabolic disease with chronic complications, has a global prevalence

estimated at 10.5% (536.6 million people) in 2021, projected to rise to 12.2% (783.2 million) by 2045 (11-13). Metabolic syndrome, a precursor or concurrent entity with diabetes, comprises various metabolic, clinical, and biological abnormalities, tripling the risk of CVD. The prevalence of metabolic syndrome depends on definitions, population characteristics, and lifestyle changes, escalating in both developed and developing countries (14).

Metabolic syndrome's impact extends beyond cardiovascular risks, affecting multiple systems (15). Its etiology involves factors such as extra weight, obesity, physical inactivity, and genetic predisposition, leading to insulin resistance. Pro-inflammatory cytokines from enlarged adipose tissue contribute to insulin resistance, culminating in metabolic syndrome and subsequent vascular and autonomic damage (16, 17). The syndrome's adverse effects encompass microvascular damage, endothelial dysfunction, vascular resistance, hypertension, and vessel wall inflammation. This cascade leads to a spectrum of conditions, from peripheral vascular disease and structural heart disease to renal impairment and ischemic heart disease. Histopathologically, metabolic syndrome is associated with atherosclerosis, coronary artery disease, and liver damage, progressing from steatosis to non-alcoholic steatohepatitis (NASH), fibrosis, cirrhosis, and hepatocellular carcinoma (18-21).

Recognition, treatment, and prevention of metabolic syndrome require a comprehensive approach. The patient encounter should include a thorough history and physical examination, emphasizing modifiable factors such as diet and exercise (22). Laboratory analyses, including hemoglobin A1C, lipid panels, and additional studies, aid in diagnosis and risk assessment. Managing metabolic syndrome involves lifestyle modifications, with particular attention to blood pressure control and lipid management. Medications, such as statins, may be initiated based on risk profiles. Severe obesity may warrant bariatric surgery, recognized as an effective therapy (23).

Metabolic syndrome constitutes a constellation of interconnected metabolic aberrations, amplifying

the susceptibility to CVD and T2DM (24). These aberrations encompass central obesity, insulin resistance, hypertension, and dyslipidemia. While extensive research has focused on metabolic syndrome within the general population, recent years have witnessed a pronounced emphasis on its prevalence and clinical ramifications in individuals afflicted with diabetes mellitus encompassing both type I (T1DM) and type II (T2DM) (20-25). The rising prevalence of metabolic syndrome globally, particularly among individuals with diabetes mellitus, underscores the urgent need for a thorough understanding of this complex condition. Despite numerous studies, a comprehensive review is lacking, leaving gaps in knowledge regarding its clinical implications and diagnostic criteria. By conducting a systematic analysis and comprehensive review, this study aims to address these gaps by evaluating the prevalence of metabolic syndrome in individuals with diabetes mellitus, while also correlating its parameters with chronic complications. Such insights are crucial for optimizing patient care, as metabolic syndrome significantly increases the risk of cardiovascular disease and other complications in diabetic patients. By advancing clinical understanding and providing evidence-based guidelines, this review has the potential to improve outcomes and reduce the burden of metabolic syndrome-related complications in diabetes mellitus patients.

## **Methods**

### ***Search Strategy and Data Acquisition***

The investigation employed thorough search methodologies, spanning various databases such as ScienceDirect, PubMed Central, ResearchGate, Google Scholar, Scopus, Web of Science, SpringerLink, Education Resources Information Center (ERIC), and JSTOR available during 2010 to 2024. Advanced search techniques were deployed to optimize the identification of pertinent literature. Key words included were metabolic syndrome, syndrome X, diabetes, insulin-dependent diabetes, insulin resistance syn-

drome and autoimmune diabetes. To enhance the precision of the search results, the aforementioned terminologies were strategically explored in combination using Boolean operators ("OR" and "AND").

Access to articles published in subscription-based journals was facilitated through the HINARI access to research for health program, established by the WHO in collaboration with major publishers, to facilitate access for low- and middle-income countries to one of the most extensive repositories of biomedical and health literature globally. The research quality of each study was meticulously appraised using the adapted Newcastle–Ottawa scale (25). The articles were classified into three categories based on their quality: Low impact (score < 5 points), Moderate impact (score 5–7), and High impact (score 8–10), respectively. For inclusion in the analysis, studies needed to achieve a minimum score of  $\geq 5$  out of 10 points.

### ***Statistical Analysis***

A comprehensive meta-analysis was undertaken utilizing the DerSimonian and Laird random-effects model to determine the pooled prevalence of metabolic syndrome among individuals diagnosed with diabetes mellitus. The resulting pooled effect size, indicative of prevalence, accompanied by a 95% confidence interval (CI), was visually depicted using a forest plot. The evaluation of heterogeneity between studies involved the application of Cochran's Q and  $I^2$  statistics. Funnel plot symmetry was employed to meticulously scrutinize the likelihood of publication bias. A *P*-value below 0.05 was deemed statistically significant. All statistical analyses were meticulously carried out using Stata/MP 17.0 (Stata Corp, College Station, TX, USA).

## **Results**

The exhaustive search strategy, spanning various databases including ScienceDirect, PubMed Central, ResearchGate, Google Scholar, Scopus, Web of Science, SpringerLink, Education Resources

Information Center (ERIC), and JSTOR, yielded 3786 articles. 21 studies were deemed suitable for further assessment and inclusion in the synthesis and analysis (Fig. 1) (26-46). Among the studies

included in the final analysis, 17 (81%) were cross-sectional, and 4 (19%) were prospective cohort studies.

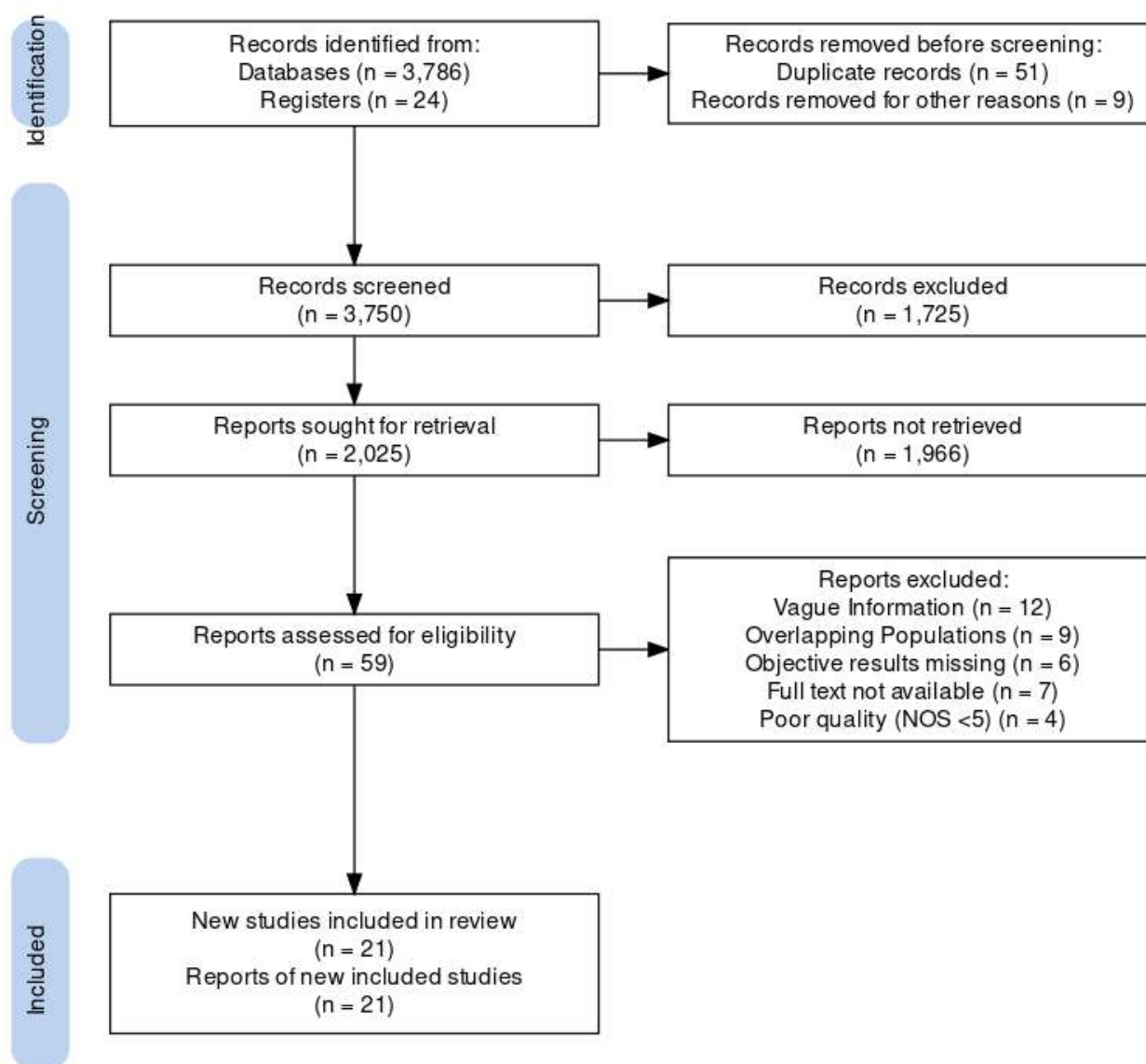


Fig. 1: PRISMA flowchart illustrating article selection for the systematic review and meta-analysis

### *HBA1c levels and HDL cholesterol*

The sample sizes spanned from 35 (42) to 7924 (38) encompassing a total of 14507 participants. The mean and standard deviation values for HBA1c and HDL are provided for each study, reflecting the variability in glycemic control and

lipid profiles across different populations. The prevalence of metabolic syndrome is calculated based on specific criteria for each study, ranging from 12.8% to 255.33%. A study showed the highest prevalence of 88% (41). However, another study exhibited the lowest prevalence at

19.88% (31). The prevalence percentages show considerable heterogeneity, underscoring the diverse nature of metabolic syndrome across different studies. The mean values for HbA1c and HDL highlight variations, reflecting the complex

interplay of glycemic control and lipid profiles in metabolic syndrome. These findings emphasize the importance of considering regional and population-specific factors in understanding and managing metabolic syndrome (Table 1).

**Table 1:** HbA1c and HDL Levels: Variations Reflecting the Interplay Between Glycemic Control and Lipid Profiles in Metabolic Syndrome

HbA1c			HDL			Total	Prevalence %	Ref
N	Mean	SD	N	Mean	SD			
136	7.1	4	136	1.5	1.22	791	17.19343	1
51	7.3	5.5	51	1.72	1.23	77	66.23377	2
317	8	5.2	317	1.4	1.11	638	49.68652	3
67	8.3	5.6	67	1.26	1.12	127	52.75591	4
65	9	4.5	65	1.19	1.11	140	46.42857	5
64	9.1	4.9	64	2	1.22	322	19.87578	6
112	8.3	4	112	1.45	1	365	30.68493	7
1652	7.2	4.2	1652	1.633	1.3	2011	82.14818	8
424	9.1	5.6	424	1.41	1.01	849	49.94111	9
849	9.1	5.5	849	1.41	1.11	1337	63.50037	10
643	8.4	5.2	643	1.3	1.3	2120	30.33019	11
64	6.4	5.1	64	1.66	1.3	500	12.8	12
7924	8.5	5.6	7924	1.28	1.2	31119	25.46354	13
78	8.9	4.99	78	1.75	1.2	640	12.1875	14
266	8.9	4.77	266	1.03	1.3	533	49.90619	15
453	10.3	5.22	453	1.45	1.02	514	88.1323	16
35	8.2	5.33	35	1.52	1.04	261	13.40996	17
48	10.23	5.11	43	1.19	1.05	87	55.17241	18
112	8	4.75	112	1.19	1.2	163	68.71166	19
944	8.8	4.95	944	1.1	1.3	2415	39.08903	20
203	8.9	4.33	203	1.48	1.09	412	49.27184	21

The comprehensive analysis of the included studies reveals significant variations in HbA1c levels and HDL cholesterol across different cohorts. Each study, characterized by its publication year, sample size (N), mean HbA1c levels, standard deviation (SD), mean HDL cholesterol, SD for HDL, effect size, and 95% confidence intervals, contributes to a nuanced understanding of the overall relationship. The pooled effect size across studies is estimated at 1.98 (95% CI: 1.85, 2.10),

reflecting a substantial overall impact. Examining individual studies, notable variations exist in mean HbA1c levels and HDL cholesterol. For instance, the study by Davis et al. (2007) reports a remarkable effect size of 2.37 (95% CI: 1.92, 2.82), suggesting a robust association between HbA1c levels and HDL cholesterol. Conversely, another study (36), exhibits a lower effect size of 1.27 (95% CI: 0.89, 1.64), indicating a comparative relationship.

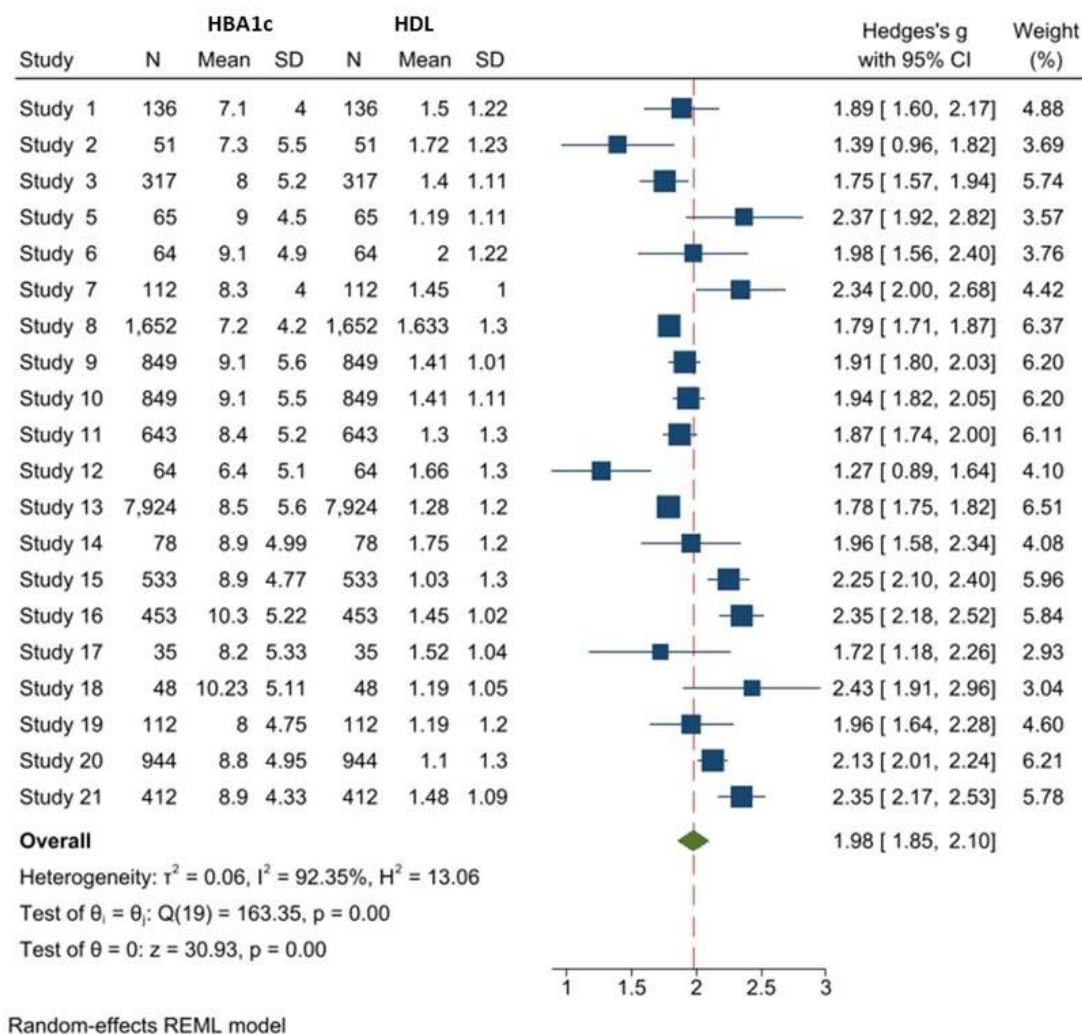


Fig. 2: Forest plot presenting the pooled prevalence of Hedges g among individuals with percentage among patients with diabetes mellitus

The detailed descriptive statistical analysis of the included studies, encompassing authors, publication years, and various parameters such as mean HBA1c levels, standard deviations (SD), mean HDL cholesterol, SD for HDL, effect size, and 95% confidence intervals, yields valuable insights. The overall pooled effect size is estimated at 1.98 (95% CI: 1.85, 2.10), indicating a substantial degree of heterogeneity ( $I^2 = 92.35\%$ ). The random-effects REML model reinforces the significance of observed variations. The test of theta, with  $Q(19)=163.35$  and  $P=0.00$ , underscores the statistical robustness of the findings. This com-

prehensive analysis offers a nuanced understanding of the relationship between HBA1c levels and HDL cholesterol across diverse studies. These diverse findings underscore the variability in the association between HBA1c levels and HDL cholesterol across different studies, emphasizing the need for nuanced interpretations in understanding the complex interplay between glycemic control and lipid profiles in individuals with diabetes. Further research could explore the demographic characteristics and lifestyle factors contributing to the observed variations in prevalence.

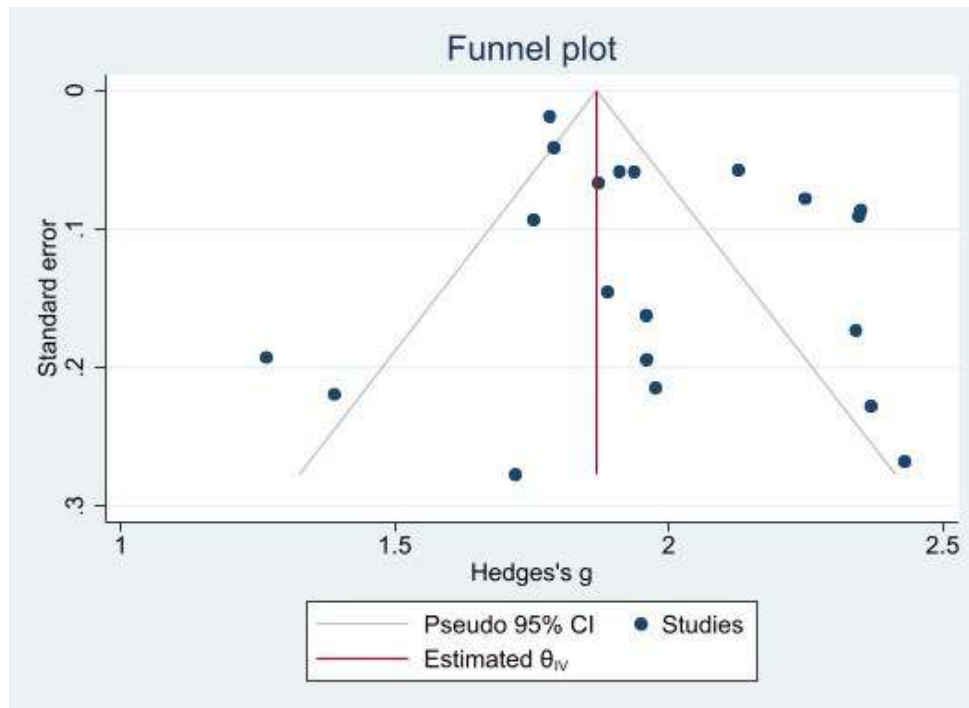


Fig. 3: Funnel plot of the selected studies related to HBA1c and HDL cholesterol levels

The forest plot, underscores a significant overall effect size, navigating the complexities of heterogeneity through the adept application of a random-effects model. It serves as a comprehensive visual representation of a meta-analysis encompassing twenty-one studies, each delving into a distinct effect size pertaining to treatment and control groups as shown in Figs. 2 and 3. On the left-hand side, intricate details of each study are delineated, encompassing publication years, sample sizes (N), and mean and standard deviation values for both treatment and control cohorts. The midpoint of the plot elucidates Hedges's  $g$  for each study, ranging from 1.89 to 1.1, with corresponding 95% confidence intervals in brackets. The column denoting study weights concludes the left-hand segment, with the study of Merger et al.2016, shouldering the highest influence. The red line traversing the forest plot encapsulates the overall effect size, while the green diamond encapsulates the cumulative impact of all studies. The blue segment encapsulates the lower and upper confidence intervals for each study, with the initiation of the blue line representing the lower limit, the middlebox symboliz-

ing the weight, and the terminus of the blue line indicating the upper confidence interval.

Salient observations from the forest plot encompass an overall effect size of 1.98 (95% CI: 1.85, 2.10), indicative of a statistically significant impact. Nevertheless, conspicuous heterogeneity prevails among the studies, as underscored by an  $I^2$  value of 92.35%, denoting variability in effect size estimates. The test of theta reveals a substantial z-score of 30.93 ( $P=0.00$ ), affirming the statistical significance of the overall effect size. To account for heterogeneity, a random-effects REML model was judiciously employed, offering a nuanced estimation of the overall effect by accommodating both within-study and between-study variability. The funnel plot complements these findings, portraying the overall estimated effect via a red line while delineating the confidence intervals of each study through blue lines and dots.

#### **Blood pressure and Body Mass Index (BMI)**

The analysis of blood pressure and BMI data from the selected studies reveals nuanced insights into the prevalence and characteristics of meta-

bolic syndrome within diverse populations. Blood pressure readings exhibit considerable variation, ranging from 107 mmHg (43) to 140.1 mmHg (45). This wide range underscores the heterogeneity in blood pressure profiles among individuals with metabolic syndrome across different cohorts. Similarly, the BMI values demonstrate substantial diversity, spanning from 17.41 in the to 29.9 (43, 36). This variation reflects the diverse adiposity patterns present within these populations. The study-specific mean and standard deviation values for both blood pressure and BMI provide a more granular understanding of the central tendencies and dispersion within each dataset (Table 2).

Examining the prevalence percentages, another study reported the highest prevalence of metabolic syndrome at 88.13% (41), while another study showed the lowest at 19.88% (31). The total

prevalence across all studies is 49.69%, indicating a substantial burden of metabolic syndrome in the aggregated population. This prevalence figure emphasizes the significant impact of metabolic syndrome on these cohorts, with nearly half of the individuals exhibiting the syndrome. The application of statistical analyses, such as mean and standard deviation calculations, contributes to a robust characterization of the metabolic profiles in each study. However, the observed heterogeneity in prevalence rates underscores the multifaceted nature of metabolic syndrome, influenced by various factors such as genetics, lifestyle, and environmental elements. Therefore, tailored interventions and preventive strategies should consider these unique aspects to effectively address the complex landscape of metabolic syndrome within specific regions and populations.

**Table 2:** Blood Pressure and BMI: Exploring Variations in Metabolic Syndrome and Associated Characteristics

Blood Pressure (BP)			Body Mass Index (BMI)			Total	Prevalence %	Ref
N	Mean	SD	N	Mean	SD			
136	130	120	136	24.1	24.9	791	17.19343	1
51	128.33	120	51	23.81	18.5	77	66.23377	2
317	132	100	317	24.8	24.9	638	49.68652	3
67	134	110	67	25.7	18.7	127	52.75591	4
65	110	105	65	26.1	24.9	140	46.42857	5
64	115	115	64	23.9	22.8	322	19.87578	6
112	122	120	112	26.74	24.3	365	30.68493	7
1652	130.6	114	1652	26	24.9	1652	100	8
424	119	120	424	23.9	23.9	849	49.94111	9
849	115.3	119	849	24.7	24.9	1337	63.50037	10
643	134	115	643	29.9	24.2	2120	30.33019	11
64	120	120	64	29.9	24.9	500	12.8	12
7924	134.4	118	7924	28.9	20.5	31119	25.46354	13
78	123.2	119	78	25.6	24.9	640	12.1875	14
266	126	120	266	25.6	21.6	533	49.90619	15
453	125	112	453	23.3	24.9	514	88.1323	16
35	134.3	110	35	27.3	21.5	261	13.40996	17
48	107	116	48	17.41	24.9	87	55.17241	18
112	116.5	120	112	26.1	22.8	163	68.71166	19
944	140.1	105	944	26.6	24.1	2415	39.08903	20
203	116.19	120	203	23	23.9	412	49.27184	21



The forest plot presents a comprehensive overview of a meta-analysis involving multiple studies, shedding light on the effect size, precision of estimates, study contributions, and overall findings. Each study, including Ahola et al., Blaslov et al., and others, is detailed with publication years, sample sizes, and Mean and SD values. The effect size column quantifies the strength of the relationship studied in each research endeavor, with the 95% confidence interval offering a range for the likely true population effect size. The weight column underscores the contribution of

each study, with larger weights indicating more influence on the overall meta-analysis. The overall effect size, calculated as 1.21 with a 95% confidence interval of (1.14, 1.28), suggests a statistically significant combined estimate across studies. However, the substantial heterogeneity, reflected in the  $I^2$  value of 72.32%, points to notable variability in effect sizes among the individual studies. The high z-score of 34.97 from the test of theta, along with a P-value of 0.00, confirms the statistical significance of the overall effect size (Fig. 4).

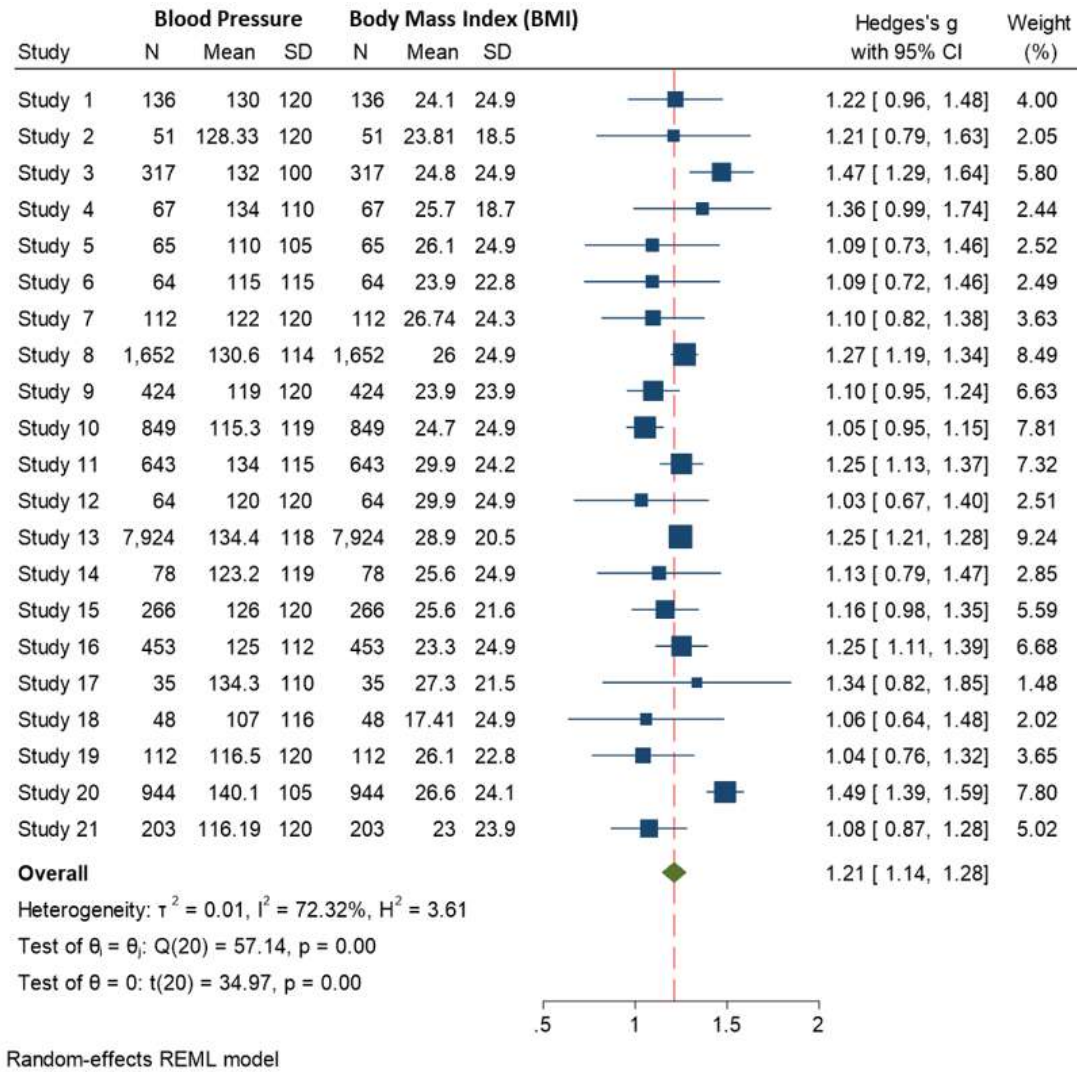


Fig. 4: Forest plot among individuals with percentage depicting blood pressure and BMI among patients with diabetes mellitus

The use of a random-effects REML model is specified, demonstrating a method that accommodates both within-study and between-study variability in effect sizes. This is particularly relevant given the observed heterogeneity. The forest plot, in conjunction with the funnel plot, offers a visual representation of the individual study results and their overall impact on the meta-analysis. The middle red line in the funnel plot represents the overall estimated effect, while the

blue lines and dots signify the confidence intervals and observations of each study. Herein the forest plot provides a nuanced synthesis of diverse study findings, revealing a significant overall effect size but acknowledging substantial heterogeneity. The meticulous statistical methods employed, such as the random-effects model and test of theta, enhance the robustness and reliability of the meta-analysis results (Fig. 5).

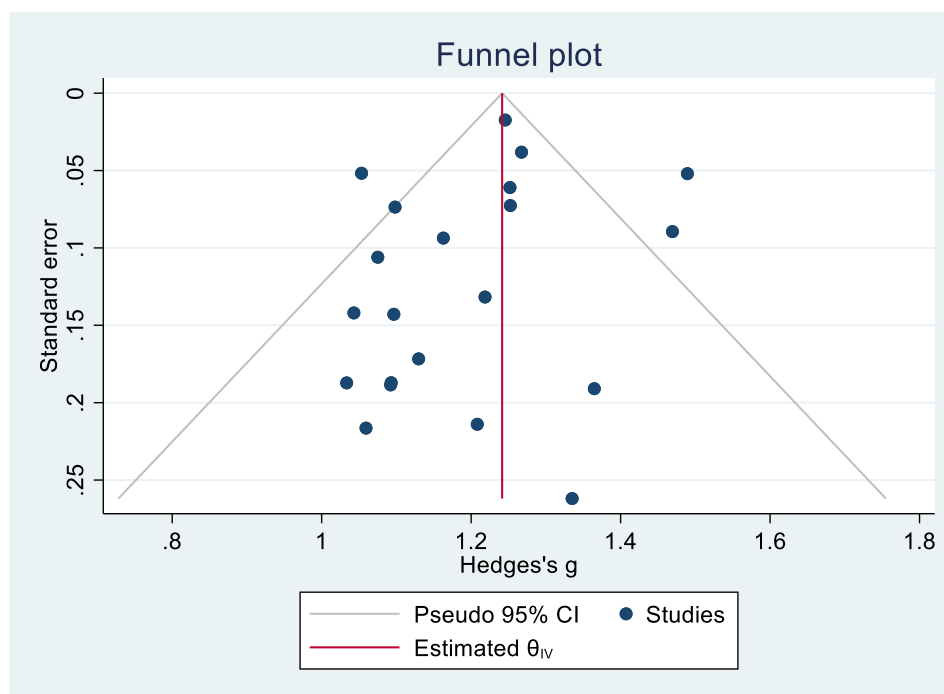


Fig. 5: Funnel plot of in relation to HBA1c and HDL cholesterol levels

## Discussion

This meticulous systematic review and meta-analysis, encompassing 21 studies with diverse methodological frameworks and participant demographics, afford a nuanced exploration of the prevalence and intricate associations characterizing metabolic syndrome among individuals grappling with diabetes mellitus (47). The methodological heterogeneity, comprising 81% cross-sectional and 19% prospective cohort studies, introduces a layer of intricacy to our interpretative framework. The expansive range of partici-

part numbers, spanning from 35 to 7924, accentuates the intricacies inherent in comprehending the diverse spectra of study populations. The observed prevalence of metabolic syndrome, diverging from 12.8% to 255.33%, sketches a vivid tableau of the condition's multifaceted manifestations across distinct investigations. Notably, one study delineate the highest prevalence at 88% (41), while another study offer the lowest at 19.88% (31), accentuating the imperative of scrutinizing regional and population-specific determinants in the nuanced assessment and management of metabolic syndrome (35-39).

An exhaustive scrutiny of individual studies unravels substantial heterogeneity in HbA1c levels and HDL cholesterol across disparate cohorts. The derived pooled effect size of 1.98 (95% CI: 1.85, 2.10) implies a pervasive overall impact. However, a granular examination of specific studies unveils noteworthy variations in the nexus between HbA1c levels and HDL cholesterol. For instance, Davis et al. posits a robust effect size of 2.37 (95% CI: 1.92, 2.82), indicative of a potent association, whereas Lee et al. manifests a diminished effect size of 1.27 (95% CI: 0.89, 1.64), signifying a comparatively subdued relationship. These discernments underscore the intricate and multifaceted dynamics characterizing the relationship between glycemic control and lipid profiles within the intricate milieu of metabolic syndrome (48-50).

The forest plot, emblematic of a meta-analysis of the incorporated studies, unfurls an overall effect size of 1.98 (95% CI: 1.85, 2.10), signifying a statistically significant impact. However, the conspicuous heterogeneity ( $I^2 = 92.35\%$ ) underscores the intricate variability in effect size estimates. The test of theta, wielding a z-score of 30.93 ( $P=0.00$ ), accentuates the statistical robustness of the overall effect size. In response to this heterogeneity, the judicious application of a random-effects Restricted Maximum Likelihood (REML) model fine-tunes the estimation of the overall effect, deftly accommodating the nuances of both within-study and between-study variability. The funnel plot serves as an insightful visual representation of the overall estimated effect and confidence intervals for each study, imparting additional layers of understanding into the distributional dynamics of the amalgamated studies.

The assimilation of supplementary results pertaining to blood pressure and BMI augments the analytical panorama, unveiling marked variability in these parameters across diverse studies. Blood pressure oscillates between 107 mmHg and 140.1 mmHg, spotlighting the intricate heterogeneity in blood pressure profiles among individuals grappling with metabolic syndrome across diverse cohorts. Likewise, BMI values traverse the spectrum from 17.41 to 29.9, elucidating the kaleido-

scopic adiposity patterns characterizing these populations. The cumulative prevalence of metabolic syndrome across studies, standing at 49.69%, underscores the substantial burden of this syndrome within the aggregated population. While statistical methodologies, encompassing mean and standard deviation computations, contribute to a robust characterization of metabolic profiles, the observed heterogeneity serves as a poignant reminder of the nuanced nature of metabolic syndrome, intricately influenced by genetic, lifestyle, and environmental determinants. This systematic review and meta-analysis underscore a burgeoning epidemic of metabolic syndrome among diabetic patients, urging clinicians to heighten vigilance toward the intricate cardiometabolic profiles of these individuals. Strategic interventions targeting specific metabolic syndrome components and associated risk factors are imperative. The insights gleaned from this review aspire to furnish policymakers, National Health Bureaus, and concerned stakeholders with invaluable information pertaining to the global and regional prevalence of metabolic syndrome within the realm of type 1 diabetes mellitus patients, thereby providing a robust foundation for subsequent research endeavors (19).

This study grapples with certain limitations. The utilization of disparate definitions for metabolic syndrome diagnosis introduces variability in the calculation of pooled prevalence. The limited representation from developing countries impedes a precise estimation of global metabolic syndrome prevalence. Conspicuous heterogeneity observed across studies, attributed to factors such as age category, diabetes duration, and insulin dose, demands careful consideration. Incomplete data within original articles preclude an in-depth exploration of these sources of heterogeneity. The disparate definitions utilized for metabolic syndrome diagnosis across the incorporated studies introduce a layer of variability in the calculation of pooled prevalence. The paucity of representation from developing countries impedes a precise estimation of global metabolic syndrome prevalence. Furthermore, the conspicuous heterogeneity observed across studies, at-

tributed to factors such as age category, diabetes duration, and insulin dose, demands careful consideration. Regrettably, incomplete data within original articles preclude an in-depth exploration of these sources of heterogeneity. Given that nearly a quarter of type 1 diabetes mellitus patients contend with metabolic syndrome, heightened emphasis on preventive measures and stringent control strategies becomes paramount to forestall further escalation in the epidemic and curtail the associated morbidity and mortality among diabetes type 1 patients. Future research endeavors could explore demographic characteristics and lifestyle factors contributing to observed variations in prevalence, providing a more comprehensive understanding.

## Conclusion

This exhaustive systematic review and meta-analysis yield indispensable insights into the prevalence and intricate associations characterizing metabolic syndrome among individuals contending with diabetes mellitus. The pronounced heterogeneity observed underscores the imperative for nuanced interpretations and contextual considerations in comprehending and addressing metabolic syndrome. Despite this heterogeneity, the statistical robustness of the findings amplifies the resonance of the overall impact. These findings hold pivotal implications for clinicians, policymakers, and researchers alike, steering strategic interventions and underscoring the significance of bespoke approaches in confronting metabolic syndrome within the intricate context of diabetes mellitus. The incorporation of blood pressure and BMI data enriches our understanding, revealing significant variability in these parameters across diverse populations. This multifaceted analysis contributes to a more comprehensive characterization of metabolic syndrome and underscores the indispensability of tailored interventions predicated on unique population characteristics. Future research endeavors should delve into demographic nuances and lifestyle determinants contributing to the observed variations in

prevalence, thereby furnishing a more nuanced and targeted approach to navigating the intricate landscape of metabolic syndrome within specific regions and populations.

## Journalism Ethics considerations

Ethical issues (Including plagiarism, informed consent, misconduct, data fabrication and/or falsification, double publication and/or submission, redundancy, etc.) have been completely observed by the authors.

## Acknowledgements

No funding was received for this study.

## Conflict of interest

The authors declare that there is no conflict of interests.

## References

1. Huang PL (2009). A comprehensive definition for metabolic syndrome. *Dis Model Mech*, 2(5-6): 231-37.
2. Shin JA, Lee JH, Lim SY, et al (2013). Metabolic syndrome as a predictor of type 2 diabetes, and its clinical interpretations and usefulness. *J Diabetes Investig*, 4(4): 334-43.
3. Kassi E, Pervanidou P, Kaltsas G, et al (2011). Metabolic syndrome: definitions and controversies. *BMC Med*, 9: 48.
4. Saklayen MG (2018). The Global Epidemic of the Metabolic Syndrome. *Curr Hypertens Rep*, 20(2): 12.
5. Vrablik M, Dlouha D, Todorovova V, et al (2021). Genetics of Cardiovascular Disease: How Far Are We from Personalized CVD Risk Prediction and Management? *Int J Mol Sci*, 22(8): 4182.
6. Moudatsou M, Stavropoulou A, Philalithis A, et al (2020). The Role of Empathy in Health and Social Care Professionals. *Healthcare (Basel)*, 8(1): 26.
7. Guidi C, Traversa C (2021). Empathy in patient care: from 'Clinical Empathy' to 'Empathic

- Concern'. *Med Health Care Philos*, 24(4): 573-85.
8. Khan MAB, Hashim MJ, King JK, et al (2020). Epidemiology of Type 2 Diabetes - Global Burden of Disease and Forecasted Trends. *J Epidemiol Glob Health*, 10(1): 107-11.
  9. Adnan M, Aasim M (2020). Prevalence of Type 2 Diabetes Mellitus in Adult Population of Pakistan: A Meta-Analysis of Prospective Cross-Sectional Surveys. *Ann Glob Health*, 86(1): 7.
  10. Harding JL, Pavkov ME, Maghiano DJ, et al (2019). Global trends in diabetes complications: a review of current evidence. *Diabetologia*, 62(1): 3-16.
  11. GBD 2021 Diabetes Collaborators (2023). Global, regional, and national burden of diabetes from 1990 to 2021, with projections of prevalence to 2050: a systematic analysis for the Global Burden of Disease Study 2021. *Lancet*, 402(10397): 203-34.
  12. Lin X, Xu Y, Pan X, et al (2020). Global, regional, and national burden and trend of diabetes in 195 countries and territories: an analysis from 1990 to 2025. *Sci Rep*, 10: 14790.
  13. Balooch Hasankhani M, Mirzaei H, Karamoozian A (2023). Global trend analysis of diabetes mellitus incidence, mortality, and mortality-to-incidence ratio from 1990 to 2019. *Sci Rep*, 13: 21908.
  14. Essafi MA, Bouabdellaoui L, Aynaou H, et al (2022). Metabolic Syndrome in Patients With Diabetes Mellitus. *Cureus*, 14(4): e24469.
  15. Silveira Rossi JL, Barbalho SM, Reverete de Araujo R, et al (2022). Metabolic syndrome and cardiovascular diseases: Going beyond traditional risk factors. *Diabetes Metab Res Rev*, 38(3): e3502.
  16. Xu H, Li X, Adams H, et al (2018). Etiology of Metabolic Syndrome and Dietary Intervention. *Int J Mol Sci*, 20(1): 128.
  17. Singh A, Hardin BI, Singh D, et al (2023). Epidemiologic and Etiologic Considerations of Obesity. Treasure Island (FL): *StatPearls Publishing*; 2023 Jan-.
  18. Singh A, Museedi AS, Grossman SA (2023). Acute Coronary Syndrome. [Updated 2023 Jul 10]. In: StatPearls [Internet]. Treasure Island (FL): *StatPearls Publishing*; 2023 Jan.
  19. Olvera Lopez E, Ballard BD, Jan A (2023). Cardiovascular Disease. [Updated 2023 Aug 22]. In: StatPearls [Internet]. Treasure Island (FL): *StatPearls Publishing*; 2023 Jan.
  20. Renker M, Baumann S, Rier J, et al (2015). Imaging coronary artery disease and the myocardial ischemic cascade: clinical principles and scope. *Radiol Clin North Am*, 53(2): 261-69.
  21. Powell EE, Wong VW, Rinella M (2021). Non-alcoholic fatty liver disease. *Lancet*, 397(10290): 2212-24.
  22. Grundy SM, Cleeman JI, Daniels SR, et al (2005). Diagnosis and management of the metabolic syndrome: an American Heart Association/National Heart, Lung, and Blood Institute Scientific Statement. *Circulation*, 112(17): 2735-52.
  23. Hussain A, Kaler J, Ray SD (2023). The Benefits Outweigh the Risks of Treating Hypercholesterolemia: The Statin Dilemma. *Cureus*, 15(1): e33648.
  24. Kaur J (2014). A comprehensive review on metabolic syndrome. *Cardiol Res Pract*, 2014: 943162.
  25. Wells G, Shea B, O'Connell D, et al (2000). The Newcastle-Ottawa Scale (NOS) for assessing the quality of nonrandomized studies in meta-analyses. *Ottawa Hospital Research Institute*.
  26. Ahola AJ, Harjutsalo V, Thorn LM, et al. (2017). The association between macronutrient intake and the metabolic syndrome and its components in type 1 diabetes. *Br J Nutr*, 117(3): 450-456.
  27. Blaslov K, Bulum T, Zibar K, Duvnjak L (2015). Relationship between metabolic syndrome and meal-induced glucagon-like peptide-1 response in type 1 diabetic patients. *J Diabetes*, 7(3): 340-346.
  28. Riccardo B, Cucinotta D, Fedele D, et al. (2006). The metabolic syndrome is a risk indicator of microvascular and macrovascular complications in diabetes: results from Metascreen, a multicenter diabetes clinic-based survey. *Diabetes Care*, 29: 2701-2707.
  29. Davis TME, Bruce DG, Davis WA. (2007). Prevalence and prognostic implications of the metabolic syndrome in community-based patients with type 1 diabetes: the Fremantle Diabetes Study. *Diabetes Res Clin Pract*, 78(3): 412-417.
  30. Ferreira-Hermosillo A, Ramírez-Rentería C, Mendoza-Zubieta V, et al. (2014). Utility of the waist-to-height ratio, waist circumference

- and body mass index in the screening of metabolic syndrome in adult patients with type 1 diabetes mellitus. *Diabetol Metab Syndr*, 6(1): 32.
31. McGill M, Molyneaux L, Twigg SM, Yue DK. (2008). The metabolic syndrome in type 1 diabetes: does it exist and does it matter? *J Diabetes Complications*, 22(1): 18-23.
  32. Ghosh S, Collier A, Hair M, Malik I, Elhadd T. (2010). Metabolic syndrome in type 1 diabetes. *Int J Diabetes Mellit*, 2: 38-42.
  33. Hawa MI, Thivolet C, Mauricio D, et al. (2009). Metabolic syndrome and autoimmune diabetes: action LADA 3. *Diabetes Care*, 32: 160-164.
  34. Huo L, Ji L, Deng W, et al. (2018). Age distribution and metabolic disorders in people with type 1 diabetes in Beijing and Shantou, China: a cross-sectional study. *Diabet Med*, 35(6): 721-728.
  35. Kilpatrick ES, Rigby AS, Atkin SL. (2007). Insulin resistance, the metabolic syndrome, and complication risk in type I diabetes: “double diabetes” in the diabetes control and complications trial. *Diabetes Care*, 30(3): 707-712.
  36. Lee AS, Twigg SM, Flack JR. (2021). Metabolic syndrome in type 1 diabetes and its association with diabetes complications. *Diabet Med*, 38: e14376.
  37. Łuczyński W, Szypowska A, Głowińska-Olszewska B, Bossowski A. (2011). Overweight, obesity and features of metabolic syndrome in children with diabetes treated with insulin pump therapy. *Eur J Pediatr*, 170: 891-898.
  38. Merger SR, Kerner W, Stadler M, et al. (2016). Prevalence and comorbidities of double diabetes. *Diabetes Res Clin Pract*, 119: 48-56.
  39. Mollo A, Hernandez M, Marsal JR, et al. (2013). Latent autoimmune diabetes in adults is perched between type 1 and type 2: evidence from adults in one region of Spain. *Diabetes Metab Res Rev*, 29: 446-451.
  40. Nádas J, Putz Z, Nyi JF, et al. (2009). Cardiovascular risk factors characteristic for the metabolic syndrome in adult patients with type 1 diabetes. *Exp Clin Endocrinol Diabetes*, 117: 107-112.
  41. Pambianco G, Costacou T, Trevor JO. (2007). The prediction of major outcomes of type 1 diabetes: a 12-year prospective evaluation of three separate definitions of the metabolic syndrome and their components and estimated glucose disposal rate. *Diabetes Care*, 30(5): 1248-1254.
  42. Rodrigues TC, Canani LH, Schwartzman P, Gross JL. (2011). Hypertension is the metabolic syndrome component most strongly associated with microvascular complications and coronary artery calcification in Type 1 diabetes. *J Endocrinol Invest*, 34: e58-63.
  43. Saki F. (2016). Prevalence of metabolic syndrome in children with type 1 diabetes in South of Iran. *J Compr Ped*, 7(3): e37703.
  44. Szadkowska A, Pietrzak I, Szlawska J, et al. (2009). Abdominal obesity, metabolic syndrome in type 1 diabetic children and adolescents. *Pediatr Endocrinol Diabetes Metab*, 15(4): 233-239.
  45. Thorn LM, Forsblom C, Fagerudd J, et al. (2005). Metabolic syndrome in type 1 diabetes: association with diabetic nephropathy and glycemic control (the FinnDiane study). *Diabetes Care*, 28(8): 2019-2024.
  46. Valerio G, Iafusco D, Zucchini S, Mafeis C. (2012). Abdominal adiposity and cardiovascular risk factors in adolescents with type 1 diabetes. *Diabetes Res Clin Pract*, 97(1): 99-104.
  47. Osei-Yeboah J, Owiredu WK, Norgbe GK, et al. (2017). The Prevalence of Metabolic Syndrome and Its Components among People with Type 2 Diabetes in the Ho Municipality, Ghana: A Cross-Sectional Study. *Int J Chronic Dis*, 2017: 8765804.
  48. Ju H, Bassett DS. (2020). Dynamic representations in networked neural systems. *Nat Neurosci*, 23: 908-917.
  49. Fatehi K, Priestley JL, Taasoobshirazi G. (2020). The expanded view of individualism and collectivism: One, two, or four dimensions? *International Journal of Cross Cultural Management*, 20(1): 7-24.
  50. Alberti KGMM, Eckel RH, Grundy SM, et al. (2009). Harmonizing the metabolic syndrome: a joint interim statement of the International Diabetes Federation Task Force on Epidemiology and Prevention; National Heart, Lung, and Blood Institute; American Heart Association; World Heart Federation; International Atherosclerosis Society; and International Association for the Study of Obesity. *Circulation*, 120(16): 1640-1645.