

Damavand Quake: A Trigger of Risk Panic in Tehran

Mehdi Zare 

Professor of Engineering Seismology, International Institute of Earthquake Engineering and Seismology (IIEES), Tehran, Iran

ARTICLE INFO

CASE REPORT

Article history:

Received: 16 May 2020

Revised: 20 May 2020

Accepted: 20 May 2020

* Corresponding Author:

Mehdi Zare

Address:

No. 21, Arghavan St., North Dibajee, Farmanieh, Tehran, Iran

Email:

mzare@iiees.ac.ir

Tel:

+98- 09183434703

On 8 May 2020, 48 minutes after the midnight (local time), a moderate earthquake with a magnitude of 5.1 on the Richter scale shocked citizens of Tehran province. Most of the people were already asleep.

The epicenter of the earthquake was in the vicinity of Damavand, a city 40km northeast of Tehran.

According to the 2016 national census, Damavand has 48,000 inhabitants.

It caused two deaths and 20 injuries. The two died because of the panic caused by the tremor. However, over a million people in Tehran left their homes and slept in parks or inside their cars.

The causative fault for the earthquake was Mosha fault, 5km north of the city of Damavand,

has a history of major historical earthquakes in 958 A.D. in Rey-Taleghan with an estimated earthquake magnitude (EEM) of 7.7; 15 June 1665 with EEM 6.5 that caused a landslide and created Taar lake in the vicinity of Damavand, actually a mountain promenade in Tehran province; 27 March 1830 EEM 7.1 in Shemiranat; 2 October 1930 EEM5.0 in Ah-Mobarakabad; 20 January 1990 EEM5.9 in Firouzkuh; and 9 May 2020 EEM5.1 in Damavand.

People living around the Mosha fault within a 25km distance are estimated to be around 300,000, while the inhabitants within its 50km are about 17.5 million, based on the 2016 census. This large population is concentrated in and around the megacity of Tehran and Karaj in the provinces of Tehran and Alborz.

There is a Mosha fault segment from Damavand towards northern Tehran, where it is estimated a locked part of the fault along about 100km length, at least since the 27 March 1930 earthquake. Therefore, there is a probability of a major earthquake triggered along this part of the Mosha fault close to Tehran.

Tehran is one of the most hazardous metropolises in the world in terms of the risk of different natural disasters, such as earthquake, flood, subsidence, drought, landslide, fire following an earthquake, etc. On the other hand, Tehran has over 8,300,000 night time population with a mixture of old non-resistant structures as well as modern high-rise buildings that affect the vulnerability of this city.

Risk of natural hazards is usually defined as below:

$Risk = Hazard * Vulnerability * Exposure$

Hazard represents the probabilities and intensities of a disaster. *Vulnerability* can be considered in terms of technical, physical, organizational, psycho-social or economic vulnerabilities, and the *Exposure* is the number or the amount of a target which is considered as elements at risk such as the population of a city.

For the city of Tehran, the hazard assessment of earthquake, flood, landslide, and subsidence is performed to derive an overall multi-hazard map.

Then, by combining the overall multi-hazard map with the distribution of non-resistant structures as the vulnerability factor and the population density as the exposure term, a risk map of the multi-hazards is prepared (Fig. 1).(1,2)

The risk map of the multi-hazards in Tehran indicates that the central and southern regions of the city are located at a higher risk zone than other regions so that the central and southern regions need a closer attention in disaster risk reduction plans.

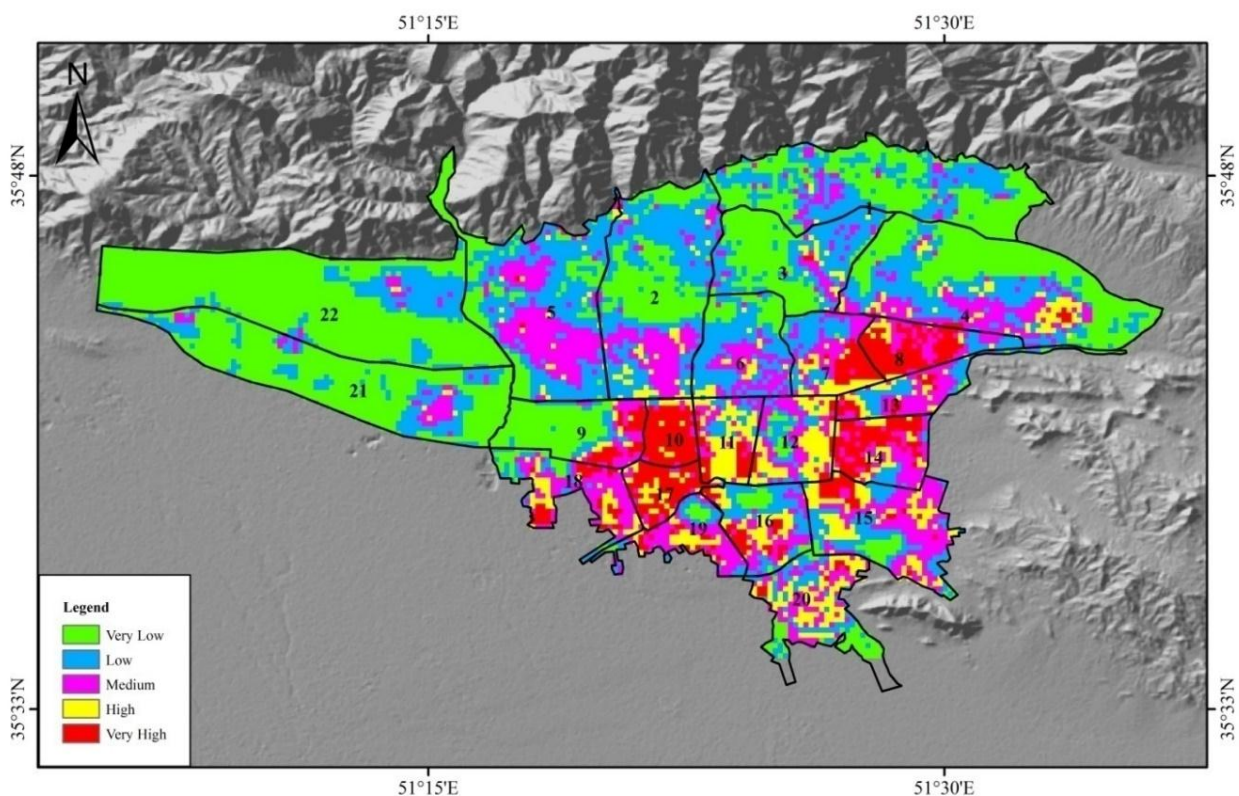


Figure 1. Risk map of the multi geo-hazards in Tehran (by Mehdi ZARE, 2015)

In addition, during the recent years, several researchers have attempted to model and assess the post-earthquake fire in urban areas. The recent serious fire incidents in single tall buildings in 2017 such as the fire in the Plasco Building (Fig2) in Tehran draws our attention to the fact that how resilient urban areas

will be in case of an extensive post-earthquake conflagration. Therefore, modeling the risk of earthquakes and their subsequent fires should be regarded as an important issue in disaster risk reduction strategies in urban areas, especially in the metropolises and large developing cities like Tehran.



Figure 2. Recent fire incidents in high-rise buildings in 2017: The 17-story Plasco Building in Tehran which was engulfed by a fire and fully collapsed on January 19, 2017

We have attempted to model the risk of probable post-earthquake fire in Tehran. At first, the earthquake hazard map was prepared by preparation and combination of two maps: a PGA map with 475 years return period for surface deposits using the

probabilistic seismic hazard analysis and fault rupture hazard map. Then, a human exposure map was provided in terms of population density according to the latest census of Iran. Several vulnerability factors (Table 1) were depicted.

Table 1. Factors of risk of post-earthquake fire in Tehran

Hazard	Exposure	Vulnerability
<ul style="list-style-type: none"> · Surface PGA · Surface fault rupture zone 	Population density	<ul style="list-style-type: none"> · High-rise buildings (> 10 floors) · Buildings quality (high quality, moderate, worn out or non-resistant) · Narrow paths (width<10 m) · Accessibility to main streets, freeways and highways · Bridges and tunnels · Fire hydrant valves · Accessibility to fire station · Accessibility to hospitals · Strategic facilities (oil refinery, gas and water lines, etc) · Potential flammable places (wood and textiles warehouses) · Population centers (the great bazaar, malls, stadiums, etc)

Based on the aggregation of these data, the overall vulnerability map was prepared. Finally, by multiplying the hazard map with the vulnerability and the exposure maps, the risk map

of the post-earthquake fire was prepared for Tehran (Fig. 3) which indicates that the central and southern regions of this city are located at a higher risk zone.

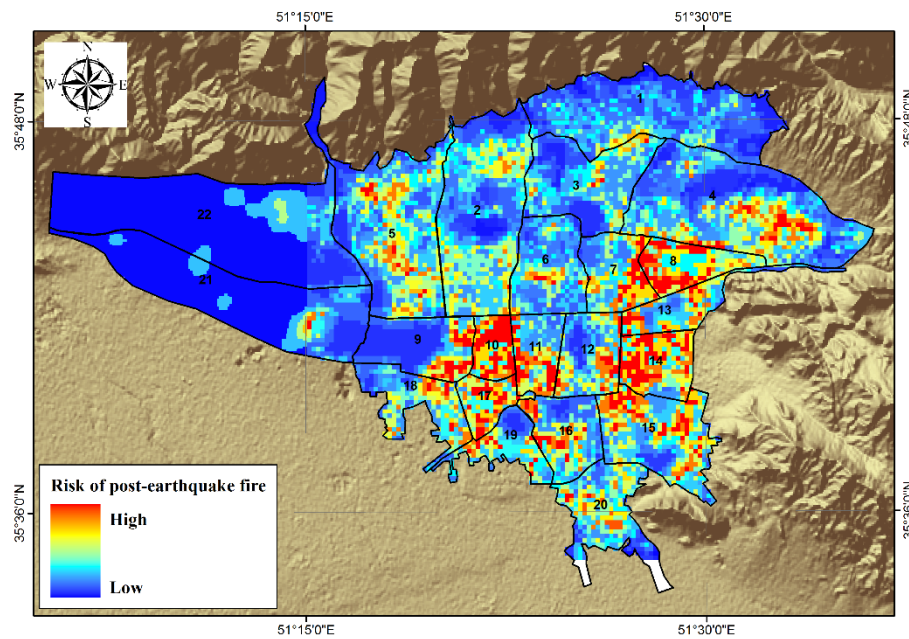


Figure 3. Risk map of post-earthquake fire in Tehran (by Mehdi ZARE, 2018)

Acknowledgments

Author appreciates the communication with the staff of the IIEES National Broadband Seismic Network.

Funding support

The study has performed based on Task Force "Lessons Learned from Earthquakes in Iran" which is conducted by the author.

Conflict of interest

This is to declare that the study and the report has no conflict of interest with neither another research work nor any other projects.

Authors' contribution

The study is performed totally by the author.

References

1. Soltanpour H, Zaré M, Moghimi E, et al. Earthquake risk assessment in northwestern Tehran using Analytical Hierarchy process (AHP), case study: 22nd District. *Disaster Prevention and Management Knowledge (quarterly)*. 2019; 8(4):373-386
2. Z Farajpour Z, Pezeshk S, Zare M. A New Empirical Ground-Motion Model for Iran. *Bulletin of the Seismological Society of America*. 2019;109(2):732-744