



Association of Catechol-O-Methyl-Transferase and Estrogen Receptors polymorphism with Severity of Temporomandibular Disorder in Iranian Patients

Hassan Roudgari ^{1,2}, Shamsoulmolouk Najafi ³, Sheyda Khalilian ⁴, Zahra Ghafarzadeh ⁵,
Aida Hahakzadeh ⁵, Sheida Behazin ⁵ and Nafiseh Sheykhbahaei ^{5*}

1. Genomic Research Center, Shahid Beheshti University of Medical Sciences, Tehran, Iran

2. Department of Applied Medicine, School of Medicine, Polwarth Building, Foresterhill Health Campus, Aberdeen University, UK, AB252ZD

3. Department of Oral Medicine, Dental Research Center, School of Dentistry, Tehran University of Medical Science, Tehran, Iran

4. Department of Medical Genetics, School of Medicine, Shahid Beheshti University of Medical Sciences, Tehran, Iran

5. School of Dentistry, Tehran University of Medical Science, Tehran, Iran

Abstract

Background: There are many studies which strongly suggest that the pathophysiology of Temporomandibular joint Disorder (TMD) may also be influenced by genetic conditions. The current study was aimed to evaluate the hypothesis that the polymorphism of estrogen receptor genes, estrogen receptor 1 and 2 (*ESR1* and *ESR2*), and the gene Catechol -O-Methyl-Transferase (*COMT*) could be Predisposing factor for TMD.

Methods: In this case-control study, blood sample were taken from 100 TMD diagnosed patients based on Research Diagnostic Criteria for Temporomandibular Disorders (RDC/TMD) and 103 healthy individuals as the control group. Tetra ARMS-PCR method was used to amplify and identify *COMT* rs4680, *ESR1* rs1643821, and *ESR2* rs1676303 gene polymorphism.

Results: *ESR1* genotype AA and GA showed significantly increase probability (OR=4.80, OR=2.98, respectively) of TMD. *ESR2* T/T homozygosity was associated with decreased risk for TMD (OR=0.41). The relationship between *COMT* and TMD was not statistically significant ($p>0.05$). The relationship between the severity of TMD and *ESR1* was significant ($p=0.003$). According to the inheritance pattern the *COMT* and *ESR1* gene, in the dominant pattern can be susceptible to TMD and in *ESR2* gene, in the recessive pattern can be protective to TMD.

Conclusion: It seems that SNPs of *ESR1* rs1643821 has a susceptible role and *ESR2* rs1676303 has a protective role against TMD. Also, we add evidences that various genotype of *COMT* rs4680 were not statistically different between case and control, but allele A in the dominant inheritance pattern can be susceptible to TMD.

Keywords: Alleles, Estrogen receptor alpha, Estrogen receptor beta, Human, Inheritance patterns, Polymorphism

To cite this article: Roudgari H, Najafi Sh, Bagherpour Kalo M, Cheraghloo N, Ghafarzadeh Z, Hahakzadeh A, Sheykhbahaei N. Association of Catechol-O-Methyl-Transferase and Estrogen Receptors polymorphism with Severity of Temporomandibular Disorder in Iranian Patients. Avicenna J Med Biotech 2023;15(4):245-252.

Introduction

Temporomandibular joint disorder (TMD) is the most common cause of facial pain and influenced by psychosocial factors (such as stress, anxiety, and somatization) ¹, parafunction ², and genetic risk factor ³. Nowadays, there are debates about the role of genetic variation in the onset of TMD and related pain. There have been many studies on the relationship between

genetic polymorphisms and musculoskeletal conditions, which strongly suggest that the pathophysiology of TMD may also be influenced by genetic conditions ⁴.

There are some genes, mostly related to catecholamine, which are believed to be associated with the regulation of the nociceptive processes, such as the Cate-

chol-O-Methyl-Transferase (*COMT*) gene⁵. The *COMT* gene is associated with genetic variants⁶ and located on the long arm of chromosome 22 and encodes an enzyme that is highly expressed in the central nervous system⁷. *COMT* is highly polymorphic within its coding and non-coding regions, which renders it to produce various forms of *COMT* enzyme⁸. Therefore, *COMT* Single-Nucleotide Polymorphisms (SNPs) can be somehow used as biomarkers for clinical purposes⁹. A functional SNP of the *COMT* gene results in a valine to methionine mutation at position 158 rs4680⁶. Hence, most studies associated with the *COMT* gene have focused on the rs4680. Overall, rs4680 was associated with psychosocial factors and pain and reduces the activity of blood cell and tissue enzymes by 25-40%¹⁰.

Since the prevalence of TMD was higher in women than men¹¹, many studies have examined the role of gender in the onset of TMD by examining sex hormones such as estrogen^{12,13}. Estrogens function is handled by multiple traditional genomic mechanisms that under specific circumstances interact with each other. The genomic mechanisms start by binding of 17 α -estradiol to Estrogen Receptor alpha (ER α) (*ESR1*) or 17 β -estradiol to Estrogen Receptor beta (ER β) (*ESR2*), these classical receptors are coded by the *ESR1* (6q25.1) and *ESR2* (14q23.2) genes, respectively. Estrogen receptors as a transcription factor directly affect the specific promoter sequences known as Estrogen Response Elements (ESREs); these specific sequences are the regulatory region of target genes¹⁴. Scientists have identified ESREs in the *COMT* genes, which are regulated by estrogen receptors^{15,16}.

Several studies have examined different polymorphisms of estrogen receptor and *COMT* genes separately^{3,17,18}, although it seems that the assessment of these three genes has not been performed together in TMD patients, especially in Iranians. The current study aimed to evaluate the hypothesis that the polymorphism of estrogen receptor genes, *ESR1* and *ESR2*, and the gene *COMT* (regulated by estrogen receptors) could be predisposing factors for TMD.

Materials and Methods

The study protocol was approved by the Medical Ethics Committee of Tehran University of Medical Sciences (IR.TUMS.DENTISTRY.REC.1397.056). Written informed consent was obtained from all participants.

Case-control study

We conducted a case-control study with two groups of subjects: 100 TMD patients and 103 healthy individuals of the same population. The participants were selected over 6 months between October 2019 and April 2020 randomly. According to Furquim, *et al*¹⁹ and considering the significance level of 5% and a power of 80%, the sample size was calculated with 76 and 91% of the dominant allele in the control and case

groups, respectively. Therefore, the minimum sample size required for each group was 93 participants.

One calibrated investigator evaluated all of the participants clinically by Axis 1 tool of the Research Diagnostic Criteria for Temporomandibular Disorders (RDC/TMD) that has been validated for clinical diagnosis of TMD²⁰. Furthermore, psychosocial impairment and pain-related factors in TMD patients were evaluated using axis II of RDC/TMD, and the severity of TMD was measured by the HELKIMO index^{21,22}.

Finally, 100 patients including 23 men and 77 women with a mean age of 36 years (18-65 years) as the case group, and a total of 103 age and gender-matched healthy individuals including 38 men and 65 women with a mean age of 35 years (20-54 years) entered the study. All individuals with TMD were selected from the referrals to the Department of Oral and Maxillofacial Diseases and Pain, Faculty of Dentistry, Tehran University of Medical Sciences. The finding of clinical examination of patients with TMD is shown in table 1. The inclusion criteria were patients with confirmed TMD according to RDC/TMD and signing the informed consent form. Patients with a diagnosis of systemic joint diseases such as rheumatoid arthritis, systemic lupus erythematosus, fibromyalgia, patients with a history of surgery in the orofacial region and/or trauma, pregnant or nursing women and significant medical conditions such as diabetes, cardiovascular diseases or cancer were excluded. Then, with a syringe 5 ml venous blood samples was taken from the antecubital vein. For separation of the hematocrit from the plasma the centrifuge was done at 2000 rpm for 10 min. Blood samples in special tubes containing 3% citric acid were stored at -20°C and within 2 hr sent to a laboratory.

Genotyping

Tetra ARMS-Polymerase Chain Reaction (T-ARMS-PCR) method with specific internal and external primers was used to amplify and identify *COMT* gene polymorphism rs4680, *ESR1* rs1643821, and *ESR2* rs1676303 (Table 2). The PCR reaction was performed in a final volume of 25 μ l (including 12.5 μ l PCR master mix, 0.5 μ l of each of the primers, 2.2 M betaine, 2 μ l of DNA sample, and 7 μ l of distilled water) using ABI VERRITI thermocycler. The application used cycles of denaturation starting at 95°C for 5 min, followed by 10 cycles of 95°C for 30 s, then 63°C for 35 s and 72°C for 45 s plus 20 cycles of 95°C for 30 s. 10 μ l of PCR product was electrophoresed on 2% agarose to detect the genotype (Figure 1). After all, a UV transilluminator was used for gel analysis.

Statistical analysis

Descriptive statistics and frequency counts were calculated. Chi-square and Fisher's exact tests were used to determine the association between categorical variables. The Shapiro-Wilk was used to check normality. If the variables were normal, a t-test and Analysis of Variance (ANOVA) were used, and if the variables

Table 1. Clinical characteristics of TMD patients (n=100)

Features	Cases
Pain in jaw, temple, ear or front of ear *	76/5%
Recurrent pain *	59/8%
Permanent pain *	12/7%
Mean severity of pain in face according to VAS *	>5
Chew tough food #	33/3%
Opening, lateral and protrusion movement #	17/6%
Press, touch, or hold teeth together other than while eating or chewing gum #	28/4%
Yawn, talk, kiss #	12/7%
Maximum mouth opening without pain ¥	43/78 mm
Maximum mouth opening with pain ¥	48 mm
Maximum assisted mouth opening ¥	49/91 mm
Midline deviation to left ¥	2/6 mm (5 cases)
Midline deviation to right ¥	0/82 mm (17 cases)
Pain of temporal muscle during jaw movement ¥	12.32%
Pain of masseter muscle during jaw movement ¥	36.96%
Pain of TMJ during jaw movement ¥	46.36%
Click with or without pain ¥	16.92%
Pain of Posterior mandibular region	43.65%
Pain of Submandibular region ¥	19.1%
Pain of Lateral pterygoid area ¥	42.65%
Pain of Temporalis tendon ¥	38.25%
Straight Opening pattern ¥	70.6%
Corrected deviation ¥	24.8%
Uncorrected deviation ¥	1%

TMD: Temporomandibular Disorder, VAS: Visual Analogue Scale.

* In the last month, # The pain gets worse during ..., ¥ The average of related item.

Table 2. PCR primers of COMT, ESR1, and ESR2 genes

Prime name Gene name	COMT rs4680	ESR1 rs1643821	ESR2 rs1676303
Forward inner primer	GGATGGTGGATTTTCGCTGTCA	GAGTTGGCTGGAGTTAGTCCGGA	CAGAGCAAGGCCTTGACACAC
Reverse inner primer	AGGCATGCACACCTTGTCCTTAAC	CCCCATTTACCCTTGCCAC	AAGAAAAGCAAAGTTCCCATACATTAATAA
Forward outer primer	GAGGGGCTCCTGCTCTTTGG	TTGGAAGTGAGGAGTGTCACCTGA	TTGTGATGCTGCATTCTGATCAG
Reverse outer primer	CTGGGGGGGTCTTTCCTCAG	CCAAACCTTTAGTCCTACAGGCC	CTCAGAAAAGAGCCCCAGGTTCC

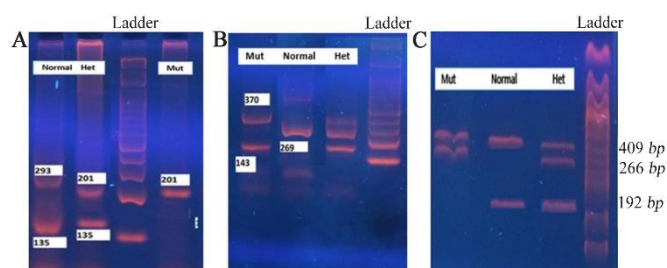


Figure 1. Agarose gel electrophoresis for each T-ARMS-PCR. A) T-ARMS-PCR assay for *COMT* rs4680, B) T-ARMS-PCR assay for *ESR1* rs1643821, C) T-ARMS-PCR assay for *ESR2* rs1676303.

were not normal, Mann-Whitney and Kruskal-Wallis tests were used to examine the differences between the groups. The association of gene variants was determined by calculating the Odds Ratio (ORs) and their 95% Confidence Interval (CI). All analyses were per-

formed using STATA version 14. A p-value <0.05 was considered as the threshold of rejection area in all analyses and all reported p-values were two-sided.

Results

The genotype frequencies of *COMT* SNP rs4680, *ESR1* SNP rs1643821, and *ESR2* SNP rs1676303 in the TMD and healthy participants are shown in table 3. Our results suggest that there was no significant relationship between *COMT* rs4680 and TMD ($p>0.05$). Although the heterozygous GA genotype increased the risk of TMD compared to the wild-type GG genotype, this relationship was not significant (OR=4.67, 95%CI: 0.92 to 45.43; $p=0.058$). This relationship is also seen between AA homozygous and GG wild-type genotypes (OR=4.78, 95%CI: 0.78 to 50.42; $p=0.081$). In estrogen receptors, there was a significant relationship between *ESR1* rs1643821 and TMD in comparison with

COMT, Estrogen Receptors Polymorphism and Temporomandibular Joint Disorder

Table 3. The allelic frequencies of *COMT* rs4680, *ESR1* rs1643821, and *ESR2* rs1676303 in the TMD (n=100) and healthy groups (n=103)

SNP	Case	control	OR	95% CI	p-value
COMT rs4680					
Co Dominant					
wt (GG)	2	9	Ref	-	-
het (AG)	81	78	4.67	(0.97,22.31)	0/03 *
mut (AA)	17	16	4.78	(0.89,25.58)	0.08
Dominant					
G/G	2	9	1	-	0/034 *
G/A- A/A	98	94	4/69	(0.98,22.28)	
Recessive					
A/A	17	16	1	-	0/77
G/G - G/A	83	87	1/11	(0.52,2.34)	
ESR1 rs1643821					
Co Dominant					
wt (GG)	12	31	Ref	-	-
het (AG)	75	65	2.98	(1.35,6.88)	0.003 **
mut (AA)	13	7	4.80	(1.35,17.62)	0.005 **
Dominant					
G/G	12	31	1	-	0/044 *
A/A-A/G	88	72	1.96	(1.01,3.800)	
Recessive					
A/A	13	7	1	-	0/09
G/G-A/G	87	96	2.23	(0.86,5.700)	
ESR2 rs1676303					
Co Dominant					
wt (CC)	19	10	Ref	-	-
het (CT)	25	21	0.63	(0.21,1.81)	0.339
mut (TT)	56	72	0.41	(0.16,1.02)	0.034 *
Dominant					
C/C	19	10	1	-	0/143
T/C-T/T	81	93	0.552	(0.248,1.231)	
Recessive					
T/T	56	72	1	-	0/03 *
C/C-T/C	44	31	0.52	(0.29,0.94)	

wt = wild type, het = heterozygous, mut = mutant, OR = odds ratio, 95%CI = 95% confident interval, Ref = referent genotype.

* Fisher exact test, **chi-square test.

the control group. Accordingly, patients with *ESR1* rs1643821 genotype AA and GA showed an increased probability (OR=4.80, 95% CI: 1.35, 17.62; p=0.005 and OR=2.98, 1.35, 6.88; p=0.003, respectively) of developing TMD about genotype GG. However, there was no significant relationship between *ESR2* rs-1676303 heterozygous CT genotype and increased risk of TMD compared to wild type CC genotype, but this relationship was significant between homozygous TT genotype and decreased the risk of TMD compared to wild type CC genotype (OR=0.41, 95%CI: 0.16 to 1.02; p=0.034).

Association of rs4680, rs1643821, and rs1676303 with severity of TMD

Table 4 shows the relationship between the severity of TMD and *COMT* SNP rs4680, *ESR1* SNP rs-1643821, and *ESR2* SNP rs1676303 in TMD (mild,

moderate, and severe) and healthy (normal) groups. According to this table, there was no significant relationship between the severity of TMD and *COMT* SNP rs4680 (p=0.673) and *ESR2* SNP rs1676303 (p=0.189), but the relationship between the severity of TMD and *ESR1* SNP rs1643821 was significant (p=0.003).

Association of the severity of TMD with risk factors in TMD patients

From a total of 100 TMD patients, 21 (21%) were male and 79 (79%) were female with a mean age of 35.75 (SD=9.09). Of these, 26 (26%), 10 (10%), and 27 (27%) had severe depression, anxiety, and somatization, respectively. Also 34 (34%), 39 (39%), 51 (51%), and 61 (61%) had pain in Temporomandibular Joint (TMJ), pain in temporalis, pain in the masseter, and pain in TMJ with open mouth, respectively. There was no statistically significant difference between the

Table 4. Association of rs4680, rs1643821, and rs1676303 with severity of TMD

SNP	Severity of TMD	Genotype			p-value *	
rs4680		wt (GG)	het (GA)	mut (AA)		
	Control	Normal	9 (81.82)	78 (49.06)	16 (48.48)	
		Mild	0 (0.0)	12 (7.55)	3 (9.09)	
	Case	Moderate	0 (0.0)	23 (14.47)	5 (15.15)	0.673
		Severe	2 (18.18)	46 (28.93)	9 (27.27)	
rs1643821		wt (GG)	het (GA)	mut (AA)		
	Control	Normal	31 (72.09)	65 (46.43)	7 (35.0)	
		Mild	2 (4.65)	10 (7.14)	3 (15.0)	
	Case	Moderate	7 (16.28)	19 (13.57)	2 (10.0)	0.003
		Severe	3 (6.98)	46 (32.86)	8 (40.0)	
rs1676303		wt (CC)	het (CT)	mut (TT)		
	Control	Normal	10 (34.48)	21 (45.65)	72 (56.25)	
		Mild	1 (3.45)	3 (6.52)	11 (8.59)	
	Case	Moderate	7 (24.14)	6 (13.04)	15 (11.72)	0.189
		Severe	11 (37.93)	16 (34.78)	30 (23.44)	

* Fisher exact test.

severity of TMD and age, sex, anxiety, and pain in temporalis ($p>0.05$), but there was a significant difference between the severity of TMD and depression ($p=0.029$), pain in TMJ ($p=0.03$), pain in masseter ($p=0.004$), and pain in TMJ with mouth opening. There was also a trend between the severity of TMD and somatization. In total, approximately 75.44% of patients in the severe TMD group suffered from TMJ pain during mouth opening ($p<0.001$) and more than 42.11% of patients with pain in TMJ suffered from severe TMD ($p=0.03$). More details are provided in table 5.

Also, the inheritance pattern for the alleles of each gene was investigated. Accordingly, in the *COMT* gene, allele A in the dominant pattern (G/A-A/A), can be susceptible to TMD ($p=0/034$, OR=4/69). In the *ESR1* gene, allele A in the dominant pattern (G/A-A/A), can be susceptible to TMD ($p=0/044$, OR=1/96) and in the *ESR2* gene, allele C in the recessive pattern (C/C-T/C), can be protective to TMD ($p=0/03$, OR=0/52) (Table 3).

Discussion

The authors in the present study hypothesized that SNPs at the estrogen receptor genes *ESR1* and *ESR2* which are functional genes implicated in pain, and also at genes whose expression is regulated by estrogen receptors, such as *COMT*, are associated with TMD. In the current study, we did not identify any significant association between *COMT* and the diagnosis of TMD. While there was a significant association between *ESR1* rs1643821 and the mutant (TT) genotype of *ESR2* with TMD. According to the inheritance pattern the *COMT* and *ESR1* gene, in the dominant pattern can be susceptible to TMD and the *ESR2* gene, in the recessive pattern, can be protective against TMD. Con-

sistent with our findings, Dalewski *et al* have found that *ESR1* rs1643821 polymorphism is positively associated with anterior disk displacement without reduction, in Caucasian patients¹⁸. Most studies related to the *ESR1* gene had evaluated two polymorphic loci in intron 1, known as the XbaI and PvuII the loci^{23,24} (not assessed in the present study).

Also, *ESR1* SNP rs1643821 could be associated with the severe form of TMD. Previous studies have proven the relationship between SNPs of different genes such as ectonucleotide pyrophosphatase/phosphodiesterase 1 (ENPP1)²⁵ and alpha-actinin-3 (ACTN3)²⁶ with the TMD prevalence and higher severity of clinical symptoms in people with facial skeletal asymmetry. Also, another study confirmed the interaction between specific polymorphisms of *COMT* and *ESR1* genes with more severe form of TMD²⁷. Identifying SNPs that predispose people to TMD can play an important role in recommendations to prevent or reduce the severity of the TMD. Among the prevention and treatment methods for TMD, education of self-care instructions is considered a conservative, and effective method to treat TMD patients especially when it is done continuously²⁸. For example, self-care and eliminating parafunction habits can reduce the risk of TMD in orthodontic patients with certain polymorphisms.

In human joint tissue, both types of estrogen receptors are expressed by chondrocytes, subchondral bone cells, synoviocytes, and ligament fibroblasts. However, alpha receptors in cortical bone and beta receptors in cartilage, cancellous bone, and synovium are maximal²⁹.

We found significant associations between the homozygous TT genotype and increased risk of TMD in the *ESR2* variants. The role of ER β is not fully under-

COMT, Estrogen Receptors Polymorphism and Temporomandibular Joint Disorder

Table 5. Relationship between TMD severity and related risk factors

Variable	TMD groups			p-value
	Mild (n = 15)	Moderate (n = 28)	Severe (n = 57)	
Age (y, mean±SD)	37.53±9.99	37.0±9.68	34.67±8.54	0.644 †
18-24	1 (6.67)	2 (7.14)	5 (8.77)	0.740 *
25-34	6 (40.0)	11 (39.29)	24 (42.11)	
35-44	4 (26.67)	9 (32.14)	22 (38.60)	
>44	4 (26.67)	6 (21.43)	6 (10.53)	
Gender (n, %)				
Male	2 (13.33)	7 (25.0)	12 (21.05)	0.698 *
Female	13 (86.67)	21 (75.0)	45 (78.95)	
Depression^a (n, %)				
Normal	8 (53.33)	10 (35.71)	8 (14.04)	0.029 *
Mild	2 (13.33)	9 (32.14)	19 (33.33)	
Moderate	3 (20.0)	2 (7.14)	13 (22.81)	
Severe	2 (13.33)	7 (25.0)	17 (29.82)	
Anxiety^a (n, %)				
Normal	5 (33.33)	13 (46.34)	33 (57.89)	0.508 *
Mild	3 (20.0)	5 (17.86)	11 (19.30)	
Moderate	4 (26.67)	7 (25.0)	9 (15.79)	
Severe	3 (20.0)	3 (10.71)	4 (7.02)	
Somatization^a (n, %)				
Normal	7 (46.67)	10 (35.71)	8 (14.04)	0.059 *
Mild	3 (20.0)	9 (32.14)	17 (29.82)	
Moderate	3 (20.0)	2 (7.14)	14 (24.56)	
Severe	2 (13.33)	7 (25.0)	18 (31.58)	
Pain in TMJ with mouth opening (n, %)				
No	12 (80.0)	13(46.43)	14 (24.56)	<0.001 *
Yes	3 (20.0)	15 (53.57)	43 (75.44)	
Pain in masseter (n, %)				
No	9 (60.0)	20 (71.43)	20 (35.09)	0.004 **
Yes	6 (40.0)	8 (28.57)	37 (64.91)	
Pain in temporalis (n, %)				
No	8 (53.33)	51 (75.0)	32 (56.14)	0.217 **
Yes	7 (46.67)	7 (25.0)	25 (43.86)	
Pain in TMJ (n, %)				
No	14 (93.33)	19 (67.86)	33 (57.89)	0.030 *
Yes	1 (6.67)	9 (32.14)	24 (42.11)	

Significant values are presented in bold, Categories are created based on a study by Schiffman *et al* ²².

† student t-test, * Fisher exact test, ** chi-square test.

stood but there are controversies about the modulatory, inhibitory, or even reciprocal role of ERβ to that of ERα ³⁰. Although two types of estrogen receptors may be expressed in the same tissue, they are not usually expressed on the surface of the same cell type. If this phenomenon occurs in a cell, ESR-β is usually an antagonist of ESR-α activity ²⁹. It is established that the co-expression of ERα and ERβ overlap in the same brain cells considerably ³¹. In the present study, this contradictory function of these two receptors is also remarkable. *ESR1* A/A homozygosity and A/G heterozygosity were associated with increased relative risk

for TMD (Odds Ratio, 4.80, 2.98), but *ESR2* T/T homozygosity was associated with decreased risk for TMD (Odds Ratio, 0.41).

Kuchler *et al* confirmed the presence of ER-α and ER-β receptors in the TMJ tissue of mice, especially young female mice. They also showed polymorphism of *ESR1* and *ESR2* genes in TMD patients. They reported that *ESR2* polymorphism was associated with disc displacement and could be a genetic marker in women with TMD ¹⁷. Quinelato *et al* in 2017, evaluated the association between *ER-β* and *ER-α* gene polymorphisms and TMD in Brazilian patients. They re-

ported that the *ER-α* gene was significantly associated with muscular and articular TMD²⁹.

Although our results indicate a relationship between *COMT* SNP rs4680 and the risk of TMD, this relationship was not significant, although allele A in the dominant inheritance pattern can be susceptible to TMD. This might be due to the small sample size. Mladenovic *et al* in a study with 90 TMD patients and 92 healthy participants, indicated that there was no association between rs4680 and TMD³². Furthermore, our findings agree with Diatchenko *et al* in failing to find any evidence indicating an association of the *COMT* gene (rs4680) with TMD³. It is important to know that environmental events such as emotional and physical stress, injury, and/or inflammation modify the influence of *COMT* and *ESRs* polymorphisms on *COMT* enzymatic activity³³. Therefore, future studies are necessary to evaluate the effects of environmental non-genetic factors on *COMT* activity and related phenotypes.

Conclusion

Our results suggest that *ESR1* and *ESR2* are involved in the overall risk for TMD. Also, we add to evidence that various genotypes of *COMT* rs4680 were not statistically different between case and control, but allele A in the dominant inheritance pattern can be susceptible to TMD. It seems that SNPs of *ESR1* rs1643821 have a susceptible role and *ESR2* rs1676303 has a protective role against TMD.

Acknowledgement

The authors thank the Technology Development and Industry Relations Management Center of the Tehran University of Medical Science for their excellent technical and financial support. GRANT Number: 9223102008. The study protocol was approved by the Medical Ethics Committee of Tehran University of Medical Sciences (IR.TUMS.DENTISTRY.REC.1397.056).

Conflict of Interest

There is not any competing interests in this study.

Funding: This study funded by Technology Development and Industry Relations Management Center of the Tehran University of Medical Science. The authors have no conflict of interest to declare.

References

- Doetzer AD, Almeida LE, de Alcântara Camejo F, de Noronha L, Olandoski M, Trevilatto PC. Association of estrogen receptor alpha 1 and TMJ dysfunction: A pilot study. *Oral Surg Oral Med Oral Pathol Oral Radiol* 2021 Apr;131(4):e89-e94.
- Mejersjö C, Pauli N. Ear symptoms in patients with orofacial pain and dysfunction - An explorative study on different TMD symptoms, occlusion and habits. *Clin Exp Dent Res* 2021 Dec;7(6):1167-74.
- Diatchenko L, Slade GD, Nackley AG, Bhalang K, Sigurdsson A, Belfer I, et al. Genetic basis for individual variations in pain perception and the development of a chronic pain condition. *Hum Mol Genet* 2005 Jan 1;14(1):135-43.
- Meloto CB, Serrano PO, Ribeiro-DaSilva MC, Rizzatti-Barbosa CM. Genomics and the new perspectives for temporomandibular disorders. *Arch Oral Biol* 2011 Nov;56(11):1181-91.
- de Souza Tesch R, Ladeira Bonato L, Quinelato V, Ladeira Casado P, Rezende Vieira A, Granjeiro JM, et al. Evaluation of genetic risk related to catechol-O-methyltransferase (*COMT*) and β 2-adrenergic receptor (*ADRB2*) activity in different diagnostic subgroups of temporomandibular disorder in Brazilian patients. *Int J Oral Maxillofac Surg*. 2020 Feb;49(2):237-243.
- Schacht JP. *COMT* val158met moderation of dopaminergic drug effects on cognitive function: a critical review. *Pharmacogenomics J* 2016 Oct;16(5): 430-8.
- Chao JK, Yang MC, Chen CS, Wang IC, Kao WT, Shi MD. A gender-specific *COMT* haplotype contributes to risk modulation rather than disease severity of major depressive disorder in a Chinese population. *J Affect Disord* 2019 Mar 1;246:376-386.
- Byś A, Zieliński G, Filipiak Z, Ginszt M. The influence of *COMT* gene functional polymorphism on formation of chronic pain. *Journal of Education, Health and Sport* 2019 Jul 26;9(7):429-42.
- Xu F, Yin J, Xiong E, Wang R, Zhai J, Xie L, et al. *COMT* gene variants and β -endorphin levels contribute to ethnic differences in experimental pain sensitivity. *Mol Pain* 2020 Jan-Dec;16:1744806920908474.
- Smith SB, Reenilä I, Männistö PT, Slade GD, Maixner W, Diatchenko L, Nackley AG, et al. Epistasis between polymorphisms in *COMT*, *ESR1*, and *GCH1* influences *COMT* enzyme activity and pain. *Pain* 2014 Nov;155(11):2390-9.
- Zhao YP, Ma XC. [Temporomandibular disorders related pain interaction with age, sex and imaging changes of osteoarthritis]. *Zhonghua Kou Qiang Yi Xue Za Zhi* 2006 Dec;41(12):757-8. Chinese.
- Patil SR, Yadav N, Mousa MA, Alzwiri A, Kassab M, Sahu R, et al. Role of female reproductive hormones estrogen and progesterone in temporomandibular disorder in female patients. *J Oral Res Rev* 2015;7:41-3.
- Berger M, Szalewski L, Bakalczuk M, Bakalczuk G, Bakalczuk S, Szkutnik J. Association between estrogen levels and temporomandibular disorders: a systematic literature review. *Prz Menopauzalny* 2015 Dec;14(4): 260-70.
- Martorell L, Costas J, Valero J, Gutierrez-Zotes A, Phillips C, Torres M, et al. Analyses of variants located in estrogen metabolism genes (*ESR1*, *ESR2*, *COMT* and *APOE*) and schizophrenia. *Schizophr Res* 2008 Mar;100(1-3):308-15.
- Schendzielorz N, Rysa A, Reenila I, Raasmaja A, Männistö PT. Complex estrogenic regulation of catechol-O-methyltransferase (*COMT*) in rats. *J Physiol Pharmacol* 2011 Aug;62(4):483-90.

16. Ho PW, Tse ZH, Liu HF, Lu S, Ho JW, Kung MH, et al. Assessment of cellular estrogenic activity based on estrogen receptor-mediated reduction of soluble-form catechol-O-methyltransferase (COMT) expression in an ELISA-based system. *PLoS One* 2013 Sep 6;8(9): e74065.
17. Küchler EC, Meger MN, Ayumi Omori M, Gerber JT, Carneiro Martins Neto E, Silva Machado NC, et al. Association between oestrogen receptors and female temporomandibular disorders. *Acta Odontol Scand* 2020 Apr 2;78(3):181-8.
18. Dalewski B, Kamińska A, Białkowska K, Jakubowska A, Sobolewska E. Association of estrogen receptor 1 and Tumor Necrosis Factor α polymorphisms with temporomandibular joint anterior disc displacement without reduction. *Dis Markers* 2020 Oct 12;2020: 6351817.
19. Furquim BD, Flamengui LM, Repeke CE, Cavalla F, Garlet GP, Conti PC. Influence of TNF- α -308 G/A gene polymorphism on temporomandibular disorder. *Am J Orthod Dentofacial Orthop*. 2016 May;149(5):692-8.
20. Dworkin SF, LeResche L. Research diagnostic criteria for temporomandibular disorders: Review criteria, examinations and specifications, critique. *J Craniomandib Disord* 1992;6(4):301-55.
21. Fonseca DM, Bonfante G, Valle AL, Freitas SF. Diagnóstico pela anamnese da disfunção craniomandibular. *RGO (Porto Alegre)* 1994;23-8.
22. Schiffman E, Ohrbach R, Truelove E, Truelove E, Look J, Anderson G, et al. Diagnostic criteria for Temporomandibular Disorders (DC/TMD) for clinical and research applications: recommendations of the International RDC/TMD consortium network* and Orofacial Pain Special Interest Group†. *J Oral Facial Pain Headache* 2014 Winter;28(1):6-27.
23. Kim BS, Kim YK, Yun PY, Lee E, Bae J. The effects of estrogen receptor α polymorphism on the prevalence of symptomatic temporomandibular disorders. *J Oral Maxillofac Surg*. 2010 Dec;68(12):2975-9.
24. Stemig M, Myers SL, Kaimal S, Islam MS. Estrogen receptor-alpha polymorphism in patients with and without degenerative disease of the temporomandibular joint. *Cranio* 2015 Apr;33(2):129-33.
25. Nicot R, Vieira AR, Raoul G, Delmotte C, Duhamel A, Ferri J, et al. ENPP1 and ESR1 genotypes influence temporomandibular disorders development and surgical treatment response in dentofacial deformities. *J Cranio-Maxillofac Surg* 2016 Sep 1;44(9):1226-37.
26. Nicot R, Chung K, Vieira AR, Raoul G, Ferri J, Sciote JJ. Condyle modeling stability, craniofacial asymmetry and ACTN3 genotypes: Contribution to TMD prevalence in a cohort of dentofacial deformities. *Plos One* 2020 Jul 29;15(7):e0236425.
27. Smith SB, Reenilä I, Männistö PT, Slade GD, Maixner W, Diatchenko L, et al. Epistasis between polymorphisms in COMT, ESR1, and GCH1 influences COMT enzyme activity and pain. *PAIN®* 2014 Nov 1;155(11): 2390-9.
28. Braga SP, Fiamengui LM, da Silveira VR, Chaves HV, Furquim BD, Cunha CO, et al. Insights for temporomandibular disorders management: From psychosocial factors to genetics—A case report. *Spec Care in Dentist* 2021 Jan;41(1):85-91.
29. Quinelato V, Bonato LL, Vieira AR, Granjeiro JM, Tesch R, Casado PL. Association between polymorphisms in the genes of estrogen receptors and the presence of temporomandibular disorders and chronic arthralgia. *J Oral Maxillofac Surg* 2018 Feb;76(2): 314. e1-314.e9.
30. Toran-Allerand CD. Estrogen and the brain: beyond ER-alpha and ER-beta. *Exp Gerontol* 2004 Nov-Dec;39(11-12):1579-86.
31. Ostlund H, Keller E, Hurd YL. Estrogen receptor gene expression in relation to neuropsychiatric disorders. *Ann N Y Acad Sci* 2003 Dec;1007:54-63.
32. Mladenovic I, Supic G, Kozomara R, Dodic S, Ivkovic N, Milicevic B, et al. Genetic Polymorphisms of Catechol-O-Methyltransferase: association with temporomandibular disorders and postoperative pain. *J Oral Facial Pain Headache* 2016;30(4):302-10.
33. Harden RN, Rudin NJ, Bruehl S, Kee W, Parikh DK, Kooch J, et al. Increased systemic catecholamines in complex regional pain syndrome and relationship to psychological factors: a pilot study. *Anesth Analg* 2004 Nov;99(5):1478-85.